

- GENERAL NOTES
1. COPYRIGHT RESERVED
  2. DO NOT SCALE DRAWING. USE FIGURED DIMENSIONS ONLY.
  3. ALL DISCREPANCIES TO BE REPORTED TO ARCHITECT.
  4. THE CONTRACTOR IS RESPONSIBLE FOR CHECKING ALL LEVELS AND DIMENSIONS.
  5. ALL STRUCTURE TO BE TO STRUCTURAL ENGINEERS DETAILS.
  6. ALL MECH & ELEC SERVICES TO SERVICES ENGINEERS DETAILS.
  7. ALL INTERIERY ITEMS TO BE INSTALLED IN ACCORDANCE WITH MANUFACTURERS INSTRUCTIONS.
  8. CONTRACTOR IS RESPONSIBLE FOR THE COORDINATION OF STRUCTURE FINISHES AND SERVICES.

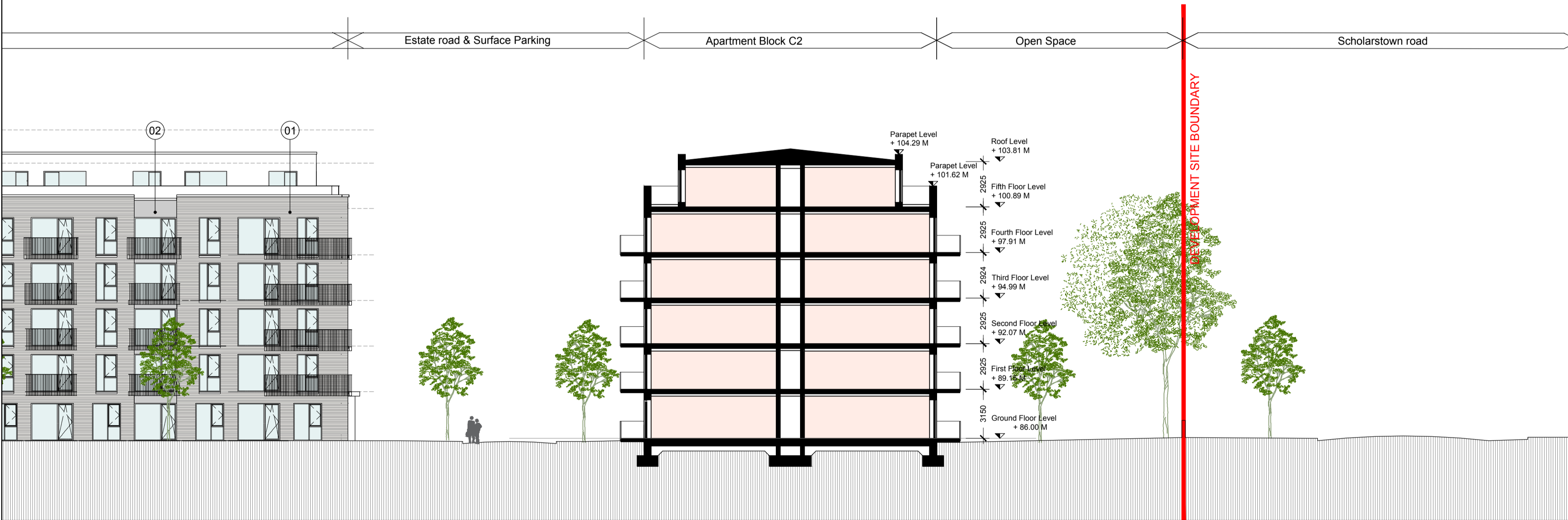
REV	DATE	DESCRIPTION	BY



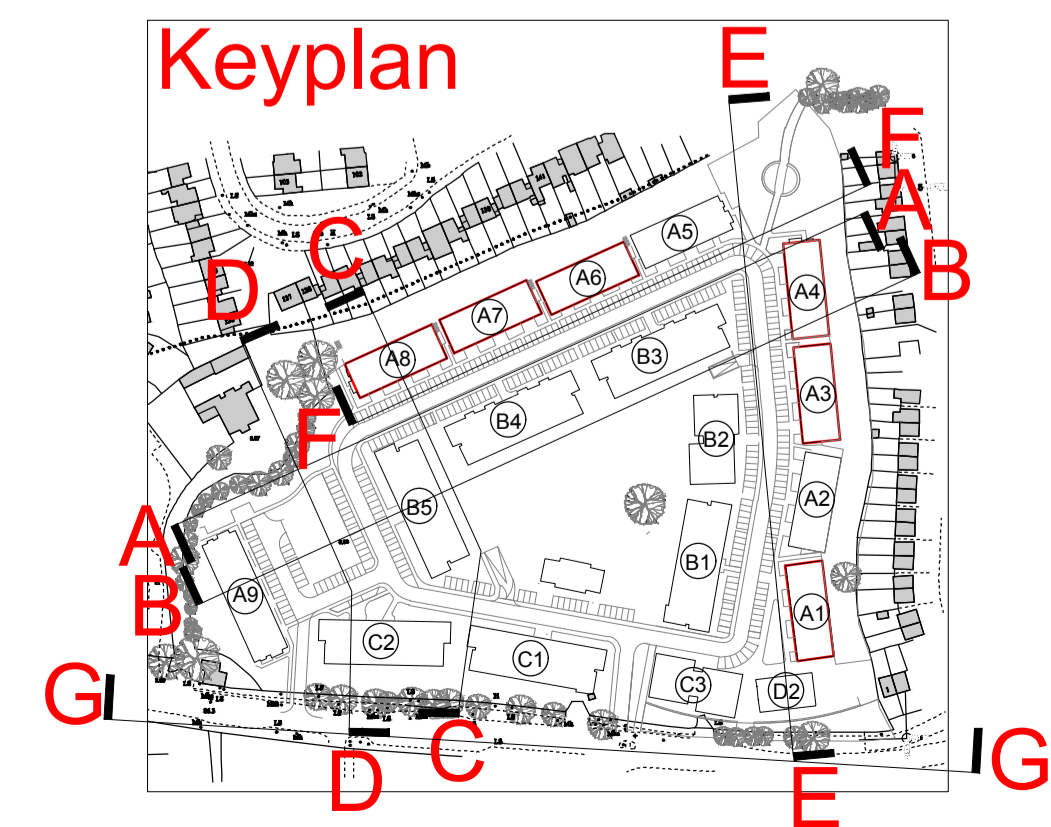
SITE SECTION D-D 1:500



SITE SECTION D-D 1:200



SITE SECTION D-D 1:200



**JOHN FLEMING ARCHITECTS**  
 103 LEESON STREET UPPER, DUBLIN 4.  
 T: (01) 6680888 E: info@jfa.ie W: www.jfa.ie

CLIENT  
Ardstone Homes Ltd

PROJECT  
Residential Development  
at Scholarstown Road

DRAWING  
Site Section D-D

SCALE  
Varies - as indicated

JOB NO.  
1823

DRAWN BY  
BD

DATE  
November 2019

DRAWING NUMBER  
P-S-9-004

REVISION

DRAWING LOCATION  
w:\18 jobs\1823\03 planning\3.1 planning application\3.1.2.dwg

DRAWING STATUS  
PLANNING